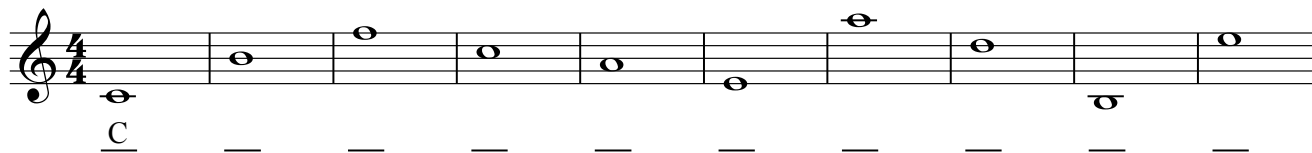


## Iowa State University Sample Fundamentals Placement Test

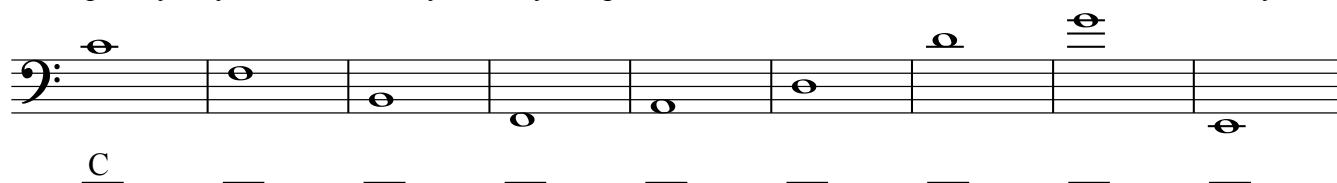
(The sample exam is not an actual test and will not be graded for placement or other purposes. It is approximately the same length as the actual Placement Exam and includes the same kinds of questions and covers the same range of materials.)

### Pitch

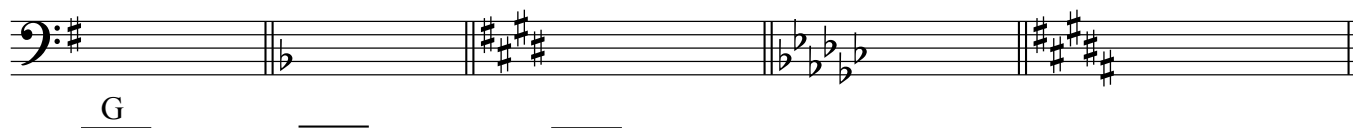
1. As quickly as you can, correctly identify the pitches below in **treble clef**. The first one is done for you.



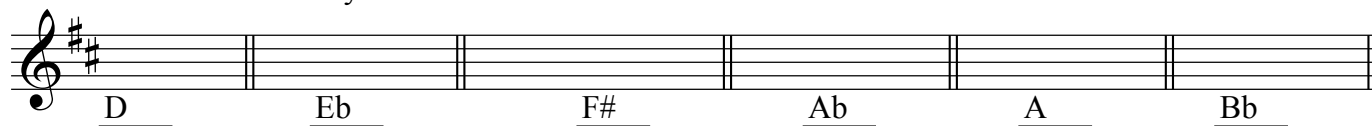
2. As quickly as you can, correctly identify the pitches below in **bass clef**. The first one is done for you.



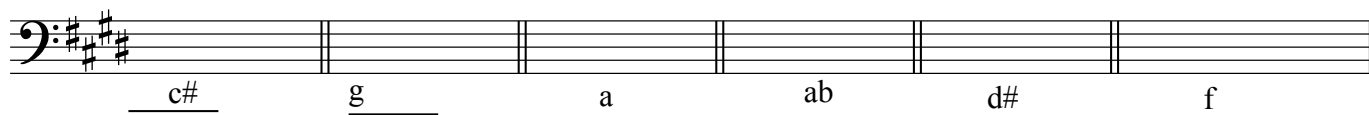
3. Correctly identify the following **major** key signatures in **bass clef**.  
The first one is done for you.



4. Correctly supply the key signatures for the following **major** keys in treble clef.  
The first one is done for you.



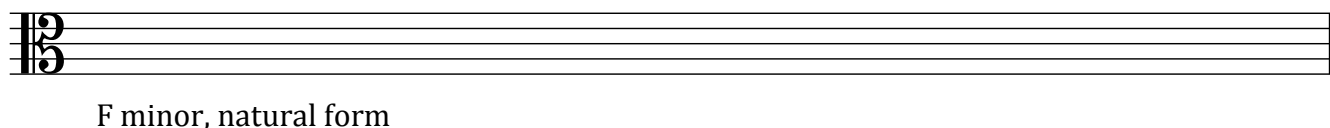
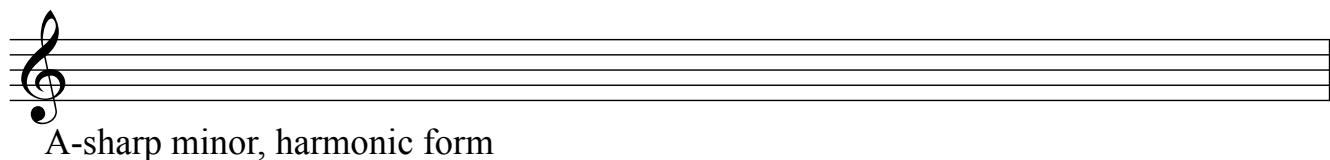
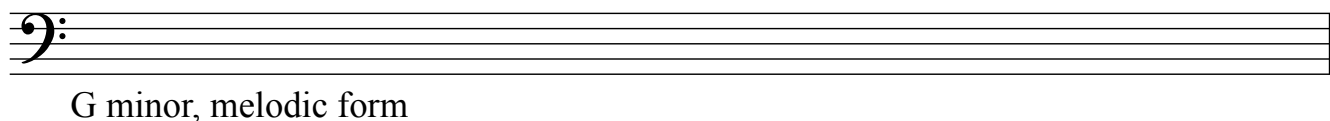
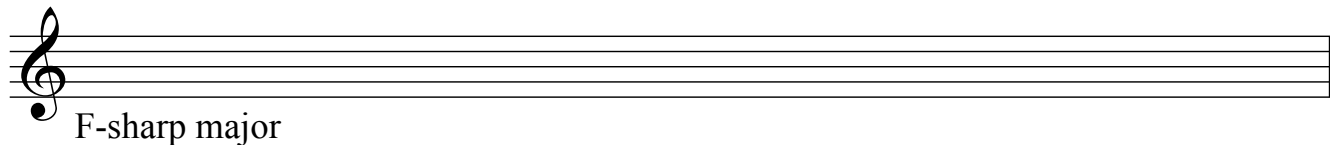
5. Correctly supply the following **minor** key signatures in **bass clef**.  
The first one is done for you.



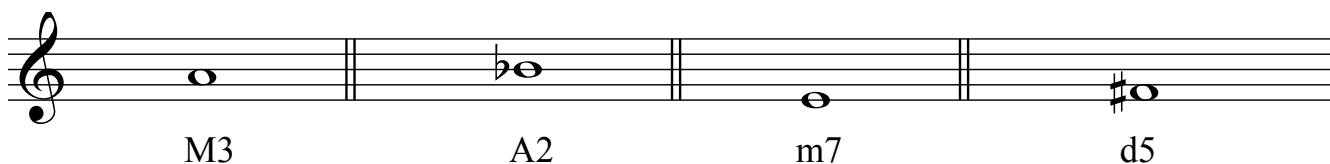
6. Correctly identify the following **minor** key signatures in **alto clef**.



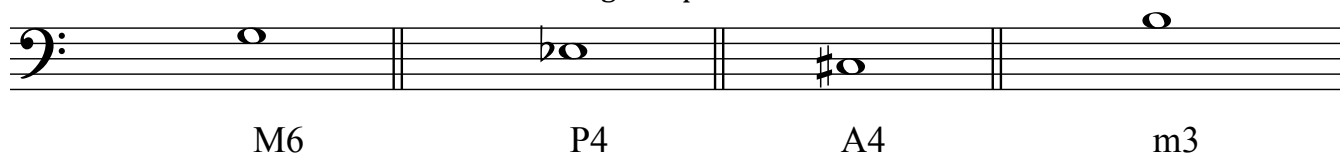
7. Using accidentals (not key signatures), notate the following scales. Careful of your clefs!



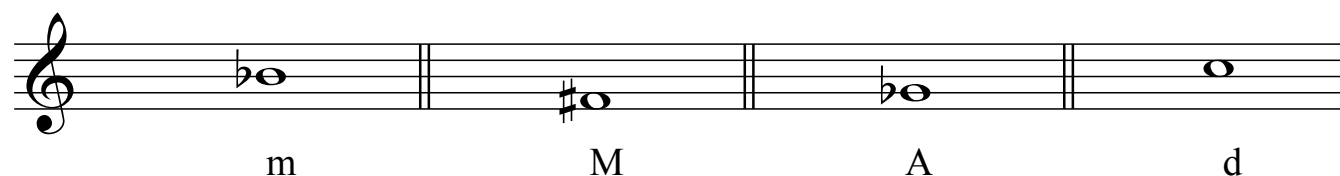
8. Notate the indicated intervals **above** the given pitches. (Quality: M = major, m = minor, A = augmented, d = diminished, P = perfect)



9. Notate the indicated intervals **below** the given pitches.



10. Notate the triads below with the quality as indicated. The given pitch is the **root**.



**Answer the following questions.**

1. The relative major of D# minor is \_\_\_\_\_.
2. The parallel minor of Ab major is\_\_\_\_\_.
3. Explain the difference between the following minor scales:
  - a. Natural minor

---

---

- b. Harmonic minor

---

---

- c. Melodic minor

---

---

## Rhythm

1. Circle the correct time signature for the measure below:



- A.  $\frac{9}{16}$     B.  $\frac{12}{16}$     C.  $\frac{3}{2}$     D.  $\frac{6}{8}$     E.  $\frac{3}{4}$

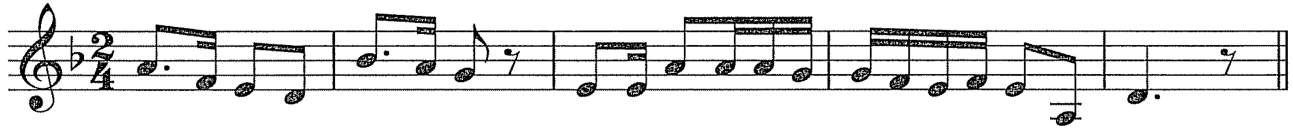
2. Circle the correct time signature for the measure below:



- A.  $\frac{6}{8}$     B.  $\frac{4}{4}$     C.  $\frac{2}{2}$     D.  $\frac{5}{8}$     E.  $\frac{12}{8}$

3. Circle the letter/measure of the following melody that contains an error in rhythmic notation.

A.                      B.                      C.                      D.                      E.



4. Circle the letter/measure of the following melody that contains an error in rhythmic notation.

A.                      B.                      C.                      D.



5. Circle the correct time signature for the measure below.



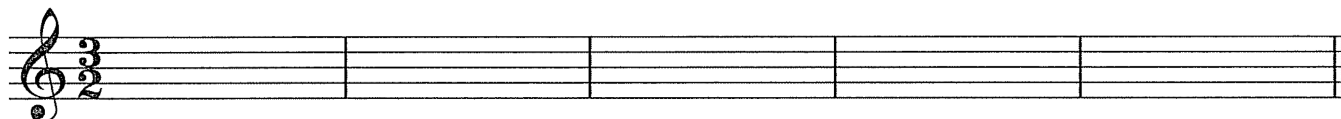
- A.  $\frac{6}{8}$     B.  $\frac{12}{8}$     C.  $\frac{6}{4}$     D.  $\frac{2}{2}$     E.  $\frac{3}{2}$

6. Circle the correct time signature for the measure below.



- A.  $\frac{6}{4}$     B.  $\frac{2}{2}$     C.  $\frac{2}{4}$     D.  $\frac{6}{8}$     E.  $\frac{5}{8}$

7. Renotate the following melody in 3/2 meter in the empty staff below.



8. Look at the excerpt below and answer the following questions as they apply to that excerpt.



- What is the key of the piece? \_\_\_\_\_
- What is the meter of the piece? \_\_\_\_\_
- What is the beat *unit* of the piece? \_\_\_\_\_
- What is the clef of the piece? \_\_\_\_\_
- What is another name for that clef? \_\_\_\_\_

9. Each measure below is incomplete. Add one or more *rests* **below each number** to complete the rhythm/beat (and measure) as needed.

