

Answer Sheet—Sample Fundamentals Placement Test

Pitch

1. As quickly as you can, correctly identify the pitches below in **treble clef**. The first one is done for you.

C B F C A E A D B E

2. As quickly as you can, correctly identify the pitches below in **bass clef**. The first one is done for you.

C F B F A D D G E

3. Correctly identify the following **major** key signatures in **bass clef**. The first one is done for you.

G F E G_b B

4. Correctly supply the key signatures for the following **major** keys in treble clef.

The first one is done for you.

D E_b F[#] A_b A B_b

5. Correctly supply the key signatures for the following **minor** keys in **bass clef**.

The first one is done for you.

c[#] g a a_b d[#] f

6. Correctly identify the following **minor** key signatures in **alto clef**.

e f g[#] d

7. Using accidentals (not key signatures) notate the following scales. Careful of your clefs!



F-sharp major



G minor, melodic form



A-sharp minor, harmonic form



F minor, natural form

8. Notate the indicated intervals **above** the given pitches. (Quality: M = major, A= augmented, d = diminished, P = perfect)



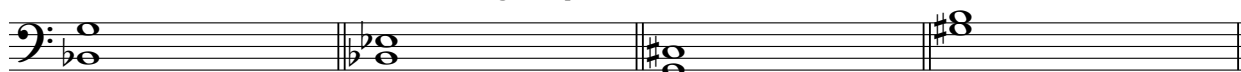
M3

A2

m7

d5

9. Notate the indicated intervals **below** the given pitches.



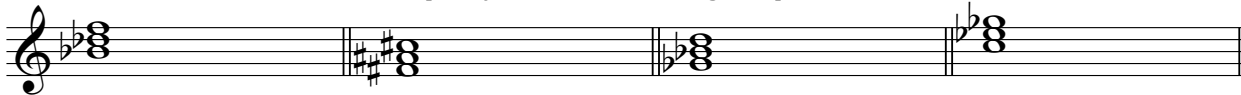
M6

P4

A4

m3

10. Notate the triads below with the quality as indicated. The given pitch is the **root**.



m

M

A

d

Answer the following questions.

1. The relative major of D# minor is _____F# major_____.
2. The parallel minor of Ab major is_____ab minor_____.
3. Explain the difference between the following minor scales:
 - a. Natural minor
Uses the given key signature with no alterations.
 - b. Harmonic minor
Raises the seventh scale degree by a half-step ascending and descending.
 - c. Melodic minor
Raises the sixth and seventh scale tones ascending by a half-step each and lowers them back down by a half-step descending.

Rhythm

1. Circle the correct time signature for the measure below: **Answer: B**



- A. $\frac{9}{16}$ B. $\frac{12}{16}$ C. $\frac{3}{2}$ D. $\frac{6}{8}$ E. $\frac{3}{4}$

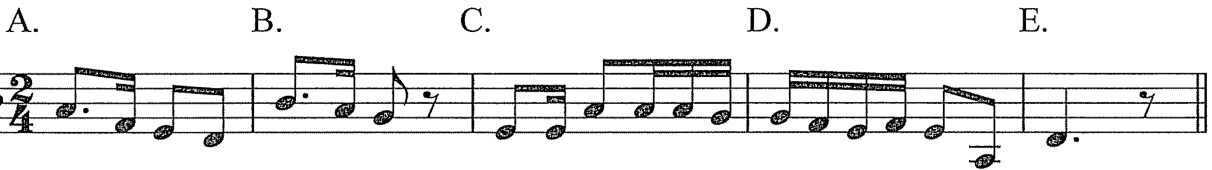
2. Circle the correct time signature for the measure below: **Answer: D**



- A. $\frac{6}{8}$ B. $\frac{4}{4}$ C. $\frac{2}{2}$ D. $\frac{5}{8}$ E. $\frac{12}{8}$

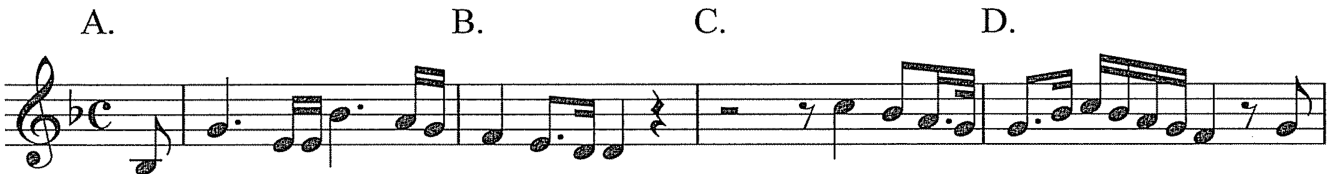
3. Circle the letter/measure of the following melody that contains an error in rhythmic notation.

Answer: C



4. Circle the letter/measure of the following melody that contains an error in rhythmic notation.

Answer: C



5. Circle the correct time signature for the measure below. **Answer: D**



- A. $\frac{6}{8}$ B. $\frac{12}{8}$ C. $\frac{6}{4}$ D. $\frac{2}{2}$ E. $\frac{3}{2}$

6. Circle the correct time signature for the measure below. **Answer: C**



- A. $\frac{6}{4}$ B. $\frac{2}{2}$ C. $\frac{2}{4}$ D. $\frac{6}{8}$ E. $\frac{5}{8}$

7. Renotate the following melody in 3/2 meter in the empty staff below.



8. Look at the excerpt below and answer the following questions as they apply to that excerpt.



- What is the key of the piece? Ab major
- What is the meter of the piece? Compound duple
- What is the beat *unit* of the piece? dotted 8th note
- What is the clef of the piece? treble
- What is another name for that clef? g clef

9. Each measure below is incomplete. Add one or more *rests* **below each number** to complete the rhythm/beat (and measure) as needed.

